



CUNINGHAM
G R O U P



NEW HIGH SCHOOL

Board Workshop

03.08.2017

St. Cloud Area School District

PURPOSE

The purpose of this meeting is review and share project progress.

MEETING AGENDA

- A. Educational Programming Update
- B. Review of Gymnastics Options & Research
- C. Architects High School Design Update
- D. Questions & Discussion



EDUCATIONAL PROGRAMMING *update*



Facility Options for Gymnastics

St. Cloud Area School District 742

Prepare. Engage. Educate. Empower. Inspire.

3 Options from the parameters given

- Option 1- Off Site Facility
 - North Crest
 - \$8000 from November-February
 - Practices 5 days a week
 - No meets at facility
 - Will need to be flexible regarding practice times
 - Granite City Gymnastics
 - No information at this time. Owner is gathering costs
 - No meets at facility
 - Will need to be flexible regarding practice times

- Option 2- use fourth gym at new school
 - Equipment set up from November-February
 - No pit
 - Basketball and dance practices will become tighter, 9th grade will need to remain at South
 - Could potentially hold duals in that space, for big meets we would move into the main gym

- Option 3- Remain at current Tech
 - Could use current practice area(there is a pit)
 - Could set up equipment in gym and be able to host meets there

project parameters

- Referendum question amount of \$104.5 million
- Construction budget of \$83.5 million, building and site
- 1600 student capacity (vs. 1800)
- 320,000 square feet (200sf/student)
- 800 seat auditorium (vs. 1200 seats)
- 3-station gym with 1 aux. gym, 4 gyms total
- Includes the pool as previously defined
- Re-starting in the middle of schematic design phase
- Building on the previous programming and design work
- Work with this High School Design Committee

WE SEE inviting, student-centered designs that integrate environmental, community and technological resources to cultivate a love of learning in all students. By celebrating beauty, function and sustainability, we build on a tradition of excellence that serves as a source of pride for students, staff and the community.

OVERALL PLAN DIAGRAM

update



LEVEL 1 PLAN

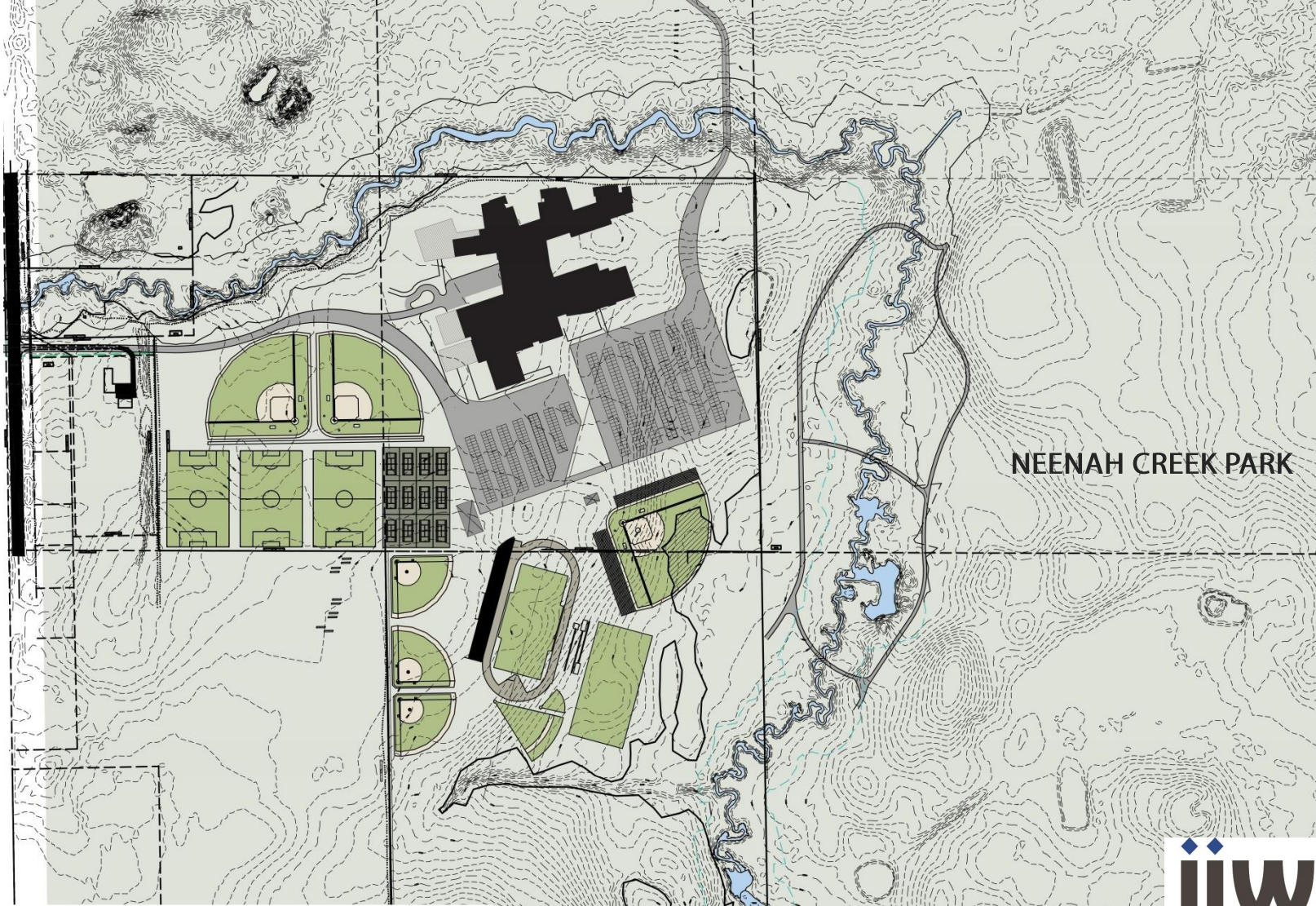


- Activities & Athletics
- Administration
- Building Support
- Circulation, Commons & Informal Learning
- Learning
- Performing Arts
- Restrooms
- Science
- Special Education
- Specialty Lab
- Storage

LEVEL 2 PLAN

Music & Performing Arts

SITE
update



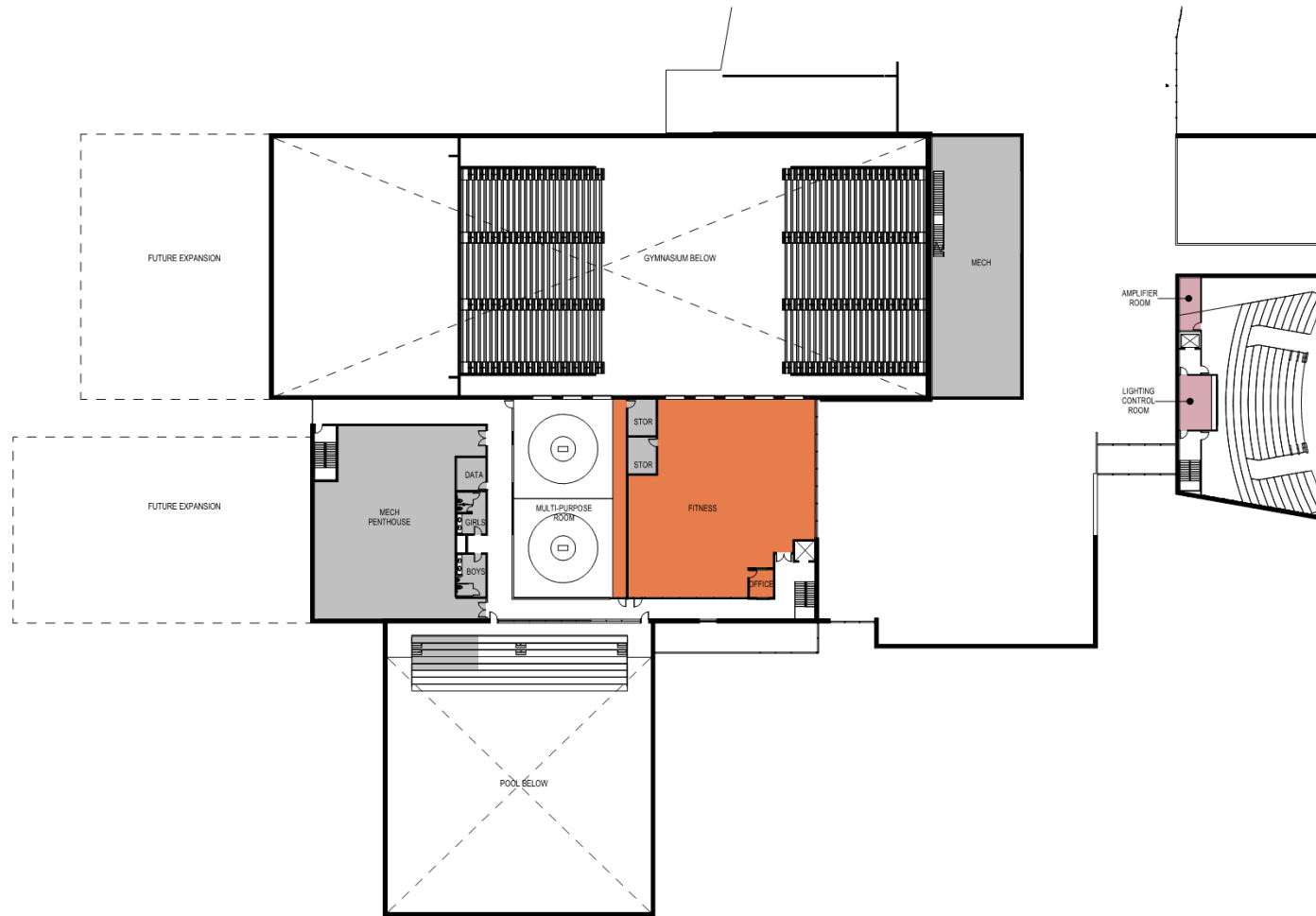
NEENAH CREEK PARK

SITE PLAN



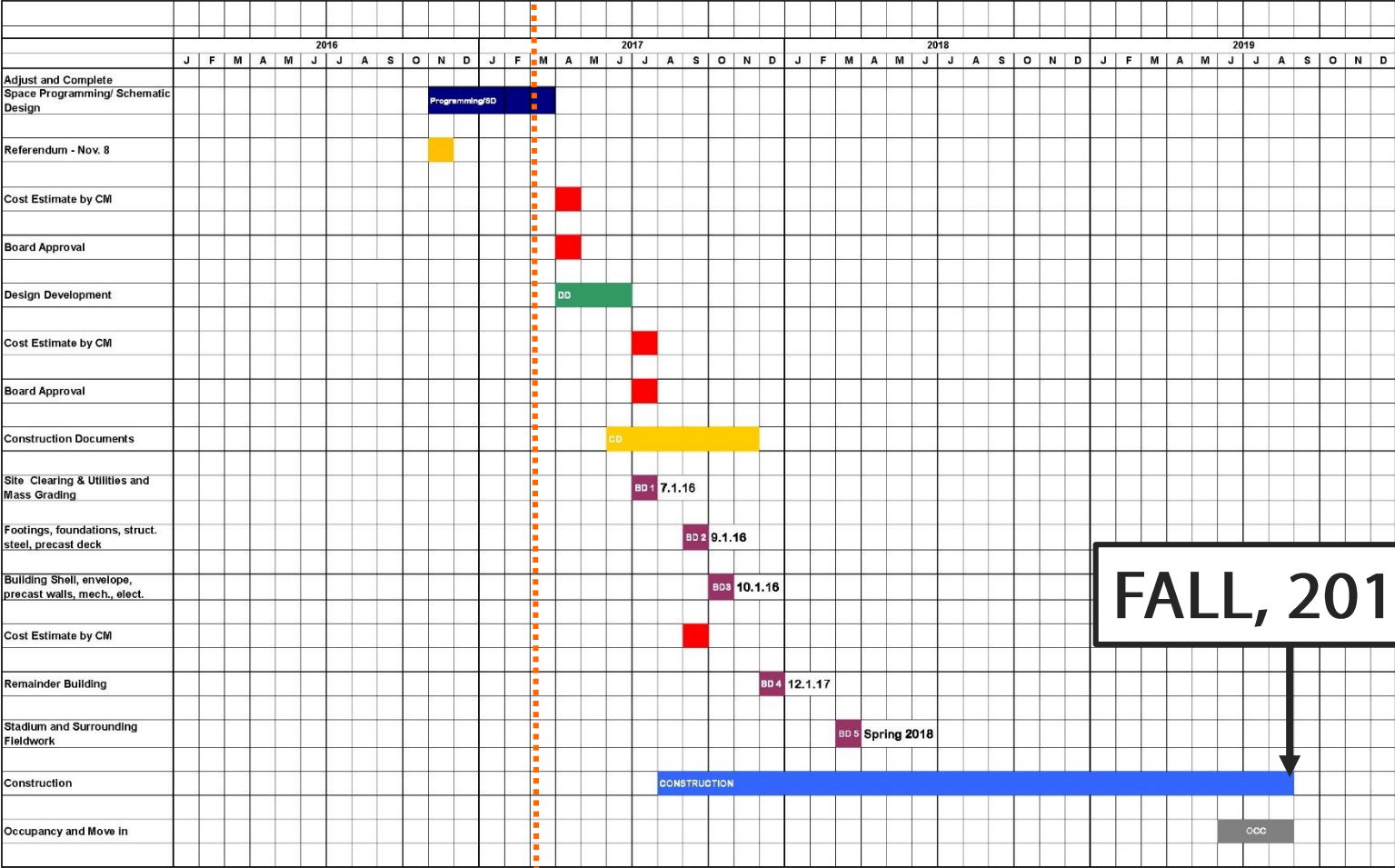
Physical Education & Activities





LEVEL 2 PLAN

← We are here.



FALL, 2019

Conceptual Design Model



CUNINGHAM
G R O U P



THANK YOU!

St. Cloud Area School District